



Omni **Dome**
house®

HUMAN & SPACE

#5 WOORIM Bldg, 90-10 PANPO4-DONG,
SEOCHO-GU, SEOUL, KOREA
TEL (82) 2 537 4209, FAX (82) 2 537 4208

www.omnidomehouse.com



Omni-Domehouse®

TABLE OF CONTENTS

1. A World of Shelter Under One Roof.....	1
2. Multipurpose Omni-Domehouse®	2.3
Omni-Domehouse® for resorts	
Omni-Domehouse® for Military	
Omni-Domehouse® for Disaster	
Omni-Domehouse® for Communications	
Omni-Domehouse® for Mining and explorations	
Omni-Domehouse® for Homeless	
3. Unique Features	4.5
Portability and Transportation	
Energy Efficiency	
Wind and Weather	
Expandability	
Containerization	
Versatility	
Durability	
Ease of Assemble	
4. Specifications	6
5. Pricelist	7
6. Floor Plans	8.9.10
7. Photos	END

INTRODUCTION

A World of Shelter Under One Roof



<Omni-Domehouse>

Now, for presidents, prime ministers, heads of state, municipal officials of major cities, general disaster relief planners for refugees and the homeless, planners of exploration camps and imaginative resorts, Omni-Domehouse® introduces an innovative frameless dome home; storable, durable, mass-producible, affordable, portable, easily assembled, impervious to arctic winds and tropical heat. It's a discovery which presents a practical, realistic solution to a major world problem.

The patented Omni-Domehouse® is designed to provide and protection in a portable frameless enclosure constructed of molded fiberglass, Lexan and other modern plastics including ecologically sound recycled materials.

The frameless dome is constructed from 1/8-inch thick concave panels that can be put together by three people in less than four hours. The only tools required for assembly area wrench, a screwdriver, and a stepladder. Each dome comes with one door and can accommodate up to five windows.

Employing spherical geometry, lightweight Omni-Domehouse® are rustproof, rainproof and can withstand harsh winter weather or summer heat. Omni-Domehouse® is used for a variety of purposes such as transitional housing for the homeless, emergency shelter for disaster victims, military applications, remote field camps, spa or equipment covers, studios, workshops, temporary habitations, storage sheds, construction shacks, camping, disaster shelter or tourist rentals.

Omni-Domehouse® combines the flexibility of a tent with the strength of a building while maintaining structural integrity through repeated assembly. The product is available in an assortment of colors and as a translucent shell. Maintenance is simply a matter of washing with soap and water.

The Omni-Domehouse® provides excellent shelter in adverse weather conditions. And it provides energy efficient housing in all climates. On site, the Omni-Domehouse® can be assembled by three men in less than four hours. Once assembled, this structure provides far greater protection against the elements than other shelters, from trailers to most framed wood structures.

INTRODUCTION

Multipurpose Omni-Domehouse®



Omni-Domehouse® for Resorts

Overnight, almost magically, you can create a resort of comfortable, frameless homes bringing your guests close to nature and fun without the high cost of fixed structures such as cottages, motels or hotels. Portable and durable, Omni-Domehouse® can be cargo-plane delivered in village-sized lots anywhere in the world.

Omni-Domehouse® can provide your guest with comfortable and effective accommodations at a fraction of the cost and construction delays associated with traditional structures. Alpine ski resorts in Korea, and beach resorts from Italy to Palau have already found Omni-Domehouse® to be comfortable and memorable guest accommodations.

Omni-Domehouse® for Military

Military strategists around the world are taking advantage of the Omni-Domehouse®'s durability and ease of assembly and transport. The Omni-Domehouse® can be flown by the planeload to troops anywhere in the world. U.S. Marine mountain troops will be testing Omni-Domehouse® as portable command centers and for troop housing. Assembled in minutes, Omni-Domehouse® can provide soldiers on the march with clean, durable, weatherproof and bulletproof base camps. An "Easy Warning Gas Dome" that would be able to withstand chemical and biological agents is currently in development. Desert heat and mountain cold will not keep your soldiers from strategic planning or needed rest. The U.S. Navy has found ideal for monitoring and communication sites.

Omni-Domehouse® for Disaster

Responsible public officials and disaster relief coordinators have found that Omni-Domehouse® is affordable and effective shelter for people displaced by disaster. Omni-Sphere Dome protected San Francisco's emergency relief coordinators while sheltering resident displaced by the 1989 earthquake and the following fires. The Red Cross sheltered survivors of Hawaii's Hurricane Iniki in the easily assembled yet durable Omni-Sphere Dome. Disaster relief officials are finding Omni-Domehouse® to be safe, sensible and affordable way to care for their people.

INTRODUCTION

Multipurpose Omni-Domehouse®



<Omni-Domehouse*>

emergency responses to oil spills and refinery explosions. U.S and international aid organizations use Omni-Domehouse® to construct portable command centers from which to respond to natural and man-made disasters. Near the front lines of massive forest fires, where durability and portability are primary concerns, the U.S. Forest Service shelters its fire fighters and command personnel in Omni-Domehouse®.

Omni-Domehouse® for Mining and exploration

From the arctic to the Sahara, mining and petroleum companies around the world have found that the Omni-Domehouse® easily provides for the comfort and contentment of their crews in almost any extreme of weather and terrain. Remote field camps built with Omni-Domehouse® is quickly delivered, a snap to set up, and easy to store away for use time after time in the most rugged circumstances.

Omni-Domehouse® for Communications

The durable Omni-Domehouse® protect sensitive electronic equipment from climactic extremes while providing comfortable living space for skilled crews. Energy companies like Arco, Unocal and Exxon utilize Omni-Domehouse® for the command centers from which they coordinate

Omni-Domehouse® for Homeless

Mayors and municipal leaders around the world have found that Omni-Domehouse® provides comfortable and durable housing for their poorest citizens. The Genesis Project, on the outskirts of the city center in Los Angeles, California, provides a working "village" where men, women and children have found refuge from the cardboard huts and the exposure of life on the streets. The Genesis Project shows that farsighted officials can affordably provide warmth, comfort, and safety to their citizen through the Omni-Domehouse®.



Omni-Domehouse® Unique Features

Portability and Transportation

The most unique features of the Omni-Domehouse® is the fact that they are frameless structures. As a result, most models can be compactly crated in standard-sized shipping containers. One standard 40' cargo container can hold up to 30 units of Omni-Domehouse®. This means that the structures can be quickly and inexpensively shipped anywhere in the world. Moreover, these units can be delivered to and removed from otherwise inaccessible areas.

Energy efficiency

The Omni-Domehouse® is an extremely energy efficient structure. This is because a dome uses the least amount of surface area to contain a given air space. As a result, heating and cooling costs are dramatically less than those of comparably sized structures. The natural convection currents itself lends to this result. It is estimated that the highly insulated models can save up to 60% in heating or cooling costs.



Wind and Weather

The enclosures are extremely wind efficient and weather resistant wind literally flows around them and rain or snow does not collect on the surface. The Omni-Domehouse® can be utilized for human habitation in any temperate or tropical climate. The Omni-Domehouse® can be used in most winter climates and will withstand adverse weather conditions.

Expandability

All models can be interconnected. Each model has five separate connection points. As a result, the user can create a "complex" tailored to his or her needs limited only by the number of units needed and the boundaries of the building site chosen.



Omni-Domehouse® Unique Features



Customizing

The company develops custom-made models to meet specifications provided by the customer. Many variations are possible and the Company's personnel are available to provide design consultation and assistance.

Versatility

One of the more unique features of the enclosures is the various ways in which they can be utilized. As an example, a municipality might purchase a number of the products to provide temporary shelter for the sufferers. Years later, when that need has been satisfied, they can use the structures for equipment storage, concession stands, park shelters, bus shelters, etc. climates and will withstand adverse weather conditions.

Durability

All models are quality built and they are strong. The Omni-Domehouse® is designed to be used and reused. Repeated assembly and disassembly has no effect upon the structural integrity.

Containerization

Another of the more unique features of the product is compact containerization. This allows the customer to store the units in a very small area during periods of non-use. For example, suppose the municipality in the example above had constructed a 32 Omni-Domehouse® complex (including centralized kitchen, dining, washroom and recreation units). Assembled that complex would provide 10,048 square feet of floor space (without lofts) and approximately 83,520 cubic feet high, 20 feet wide and 40 feet long. The units and their containers are impervious to the elements, and the entire complex could be stored outdoors.



Ease of assembly

All parts and assembly can be managed by two to three people. The parts are engineered to close tolerance and require only simple tools for assembly (wrench, screwdriver and stepladder), eliminating the need for costly construction crews.



Omni-Domehouse®

Specifications

Watertight

All models are rustproof, rainproof and provide excellent shelter from all natural elements. They can even be stored underwater or in high humidity conditions. Maintenance is simply a matter of washing with soap and water.

Electricity

Electrical supply may be provided from common external source or smaller wattage "internal" sources such as 12-volt batteries.

Water and Plumbing

Water may be supplied from external sources or self-contained units (tanks, chemical toilets, etc.).

Heating and Insulation

Heating can be supplied from external source or small heating units located in each Omni-Domehouse®.

The Omni-Domehouse® is a unique, frameless structure made of molded panels that offers the structural flexibility of a tent with the rigidity of a standard building. It can be assembled and taken down repeatedly without losing its structural integrity. Its **panels are pre-drilled**, threaded and sanded to close tolerances for ease construction. Panels are attached to each other with rustproof nylon zytel nuts, bolts and watertight gaskets.

The Omni-Domehouse® is available in models with 20' and 17'. The basic dome is a bare wall model; **We don't supply inside facilities** such as toilet, kitchen **for exporting**.; however, architect's plans are available to help buyers build a wide variety of internal options from multiple interior rooms to storage lofts to kitchens, baths or office space. With a sufficiently large order, domes can be produced in special color.

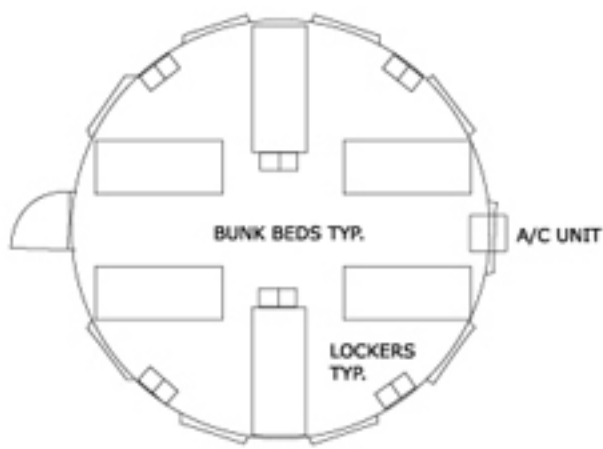
The fiberglass Omni-Domehouse® is made of **1/8-inch thick** panels with a 5 mil gel coat inside and out that eliminates maintenance beyond an occasional washing or waxing.

Each dome comes with one door and can accommodate up to five windows and two lattice windows. **Doorways can also be used as connectors between domes** can be joined into a modular cluster. Omni-Domehouse® is mounted on concrete, wooden decking or bare earth.

Fire resistance factors can be extrapolated from the known characteristics of the materials utilized for production. All fiberglass-constructed enclosures are capable of having a **Class 1 or Class A rating**.

Omni-Domehouse® FLOOR PLANS

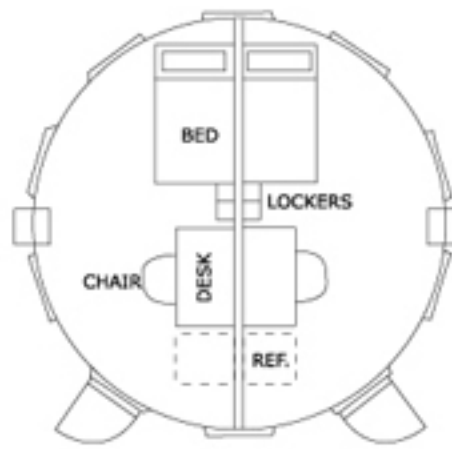
TYPE A



12-MAIN UNIT

FLOOR PLAN
SCALE 1/4"=1'-0"

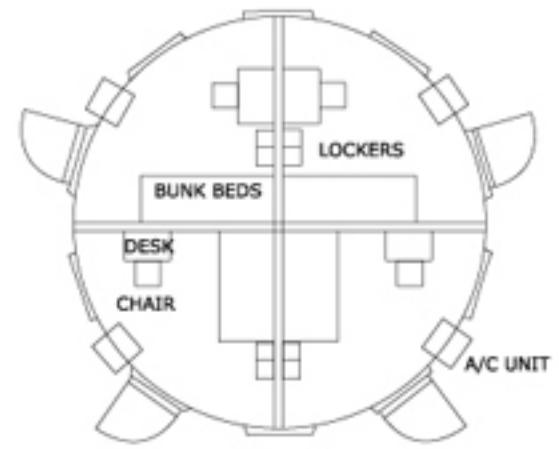
TYPE B



SENIOR MGT. UNIT

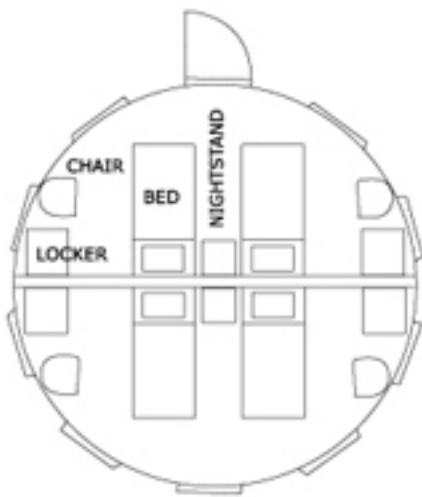
FLOOR PLAN
SCALE 1/4"=1'-0"

TYPE C



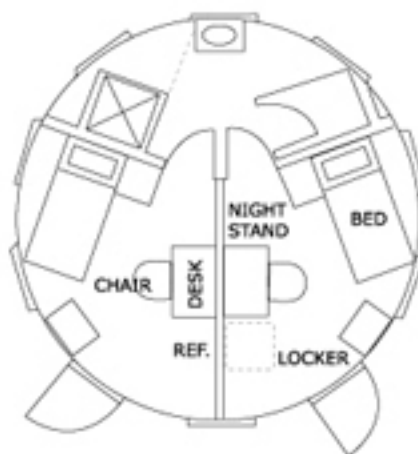
8-MAN UNIT

FLOOR PLAN
SCALE 1/4"=1'-0"



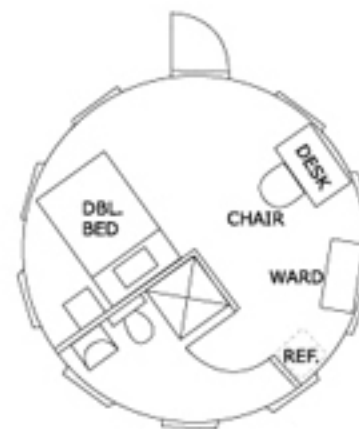
4-PERSON UNIT

FLOOR PLAN
SCALE 1/4"=1'-0"



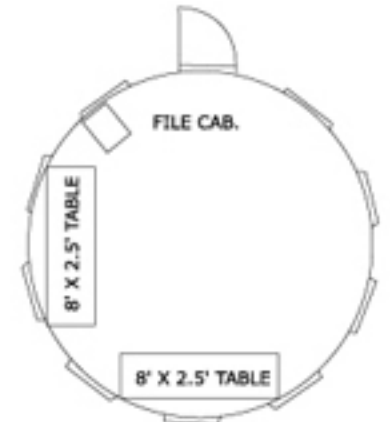
2-PERSON UNIT

FLOOR PLAN
SCALE 1/4"=1'-0"



1-PERSON UNIT

FLOOR PLAN
SCALE 1/4"=1'-0"



COMMUNICATIONS UNIT

FLOOR PLAN
SCALE 1/4"=1'-0"

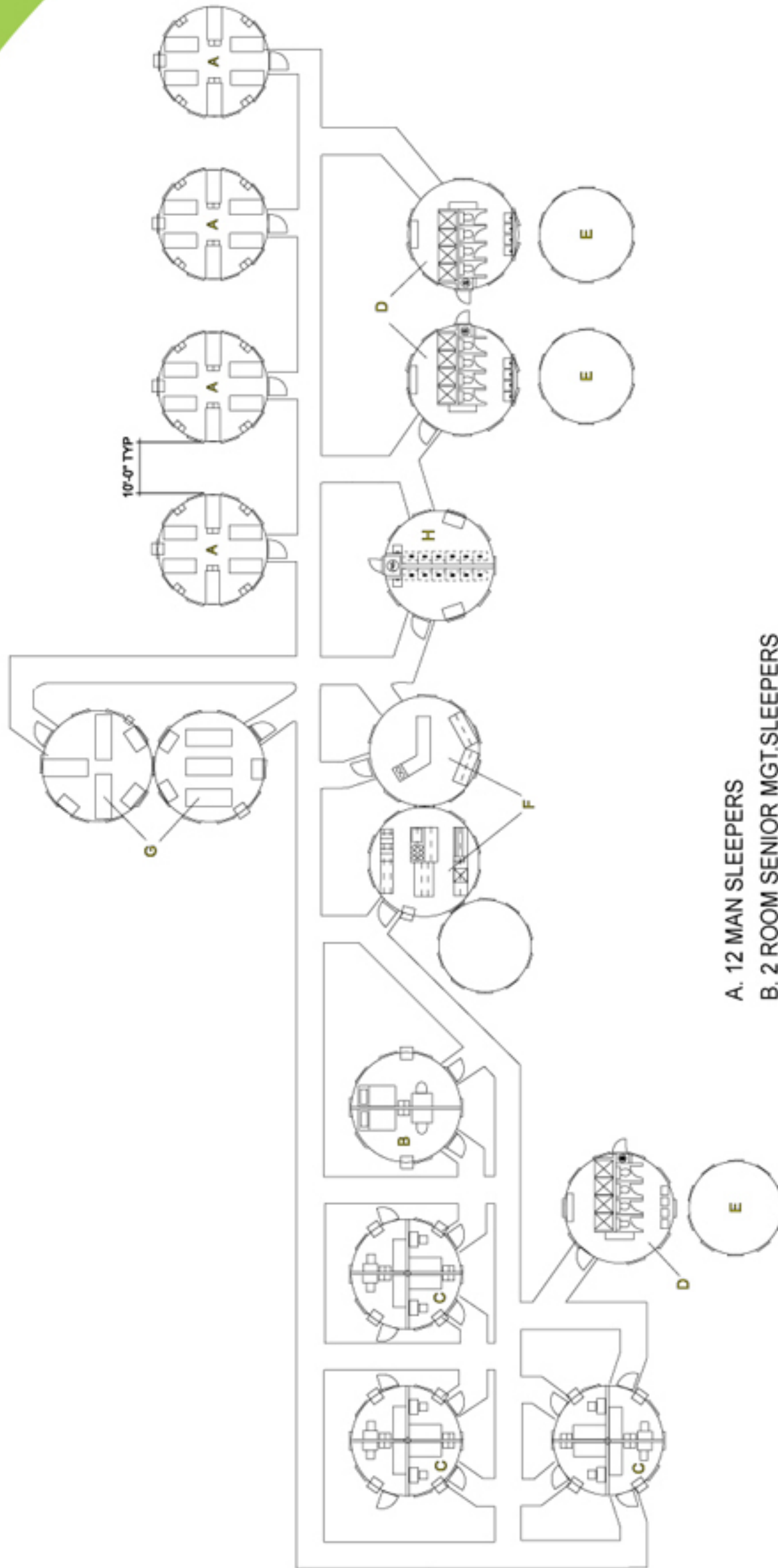
20' Omni-Domehouse®

20' Omni-Domehouse®

17' Omni-Domehouse®

17' Omni-Domehouse®

Omni-Domehouse® FLOOR PLANS



- A. 12 MAN SLEEPERS
- B. 2 ROOM SENIOR MGT.SLEEPERS
- C. 4 ROOM MGT. SLEEPERS
- D. ABLUTION
- E. WASTE/WATER STORAGE BLDG.
- F. KITCHEN/STORAGE/COLLER COMPLEX
- G. DINING/RECREATION FACILITY
- H. LAUNDRY

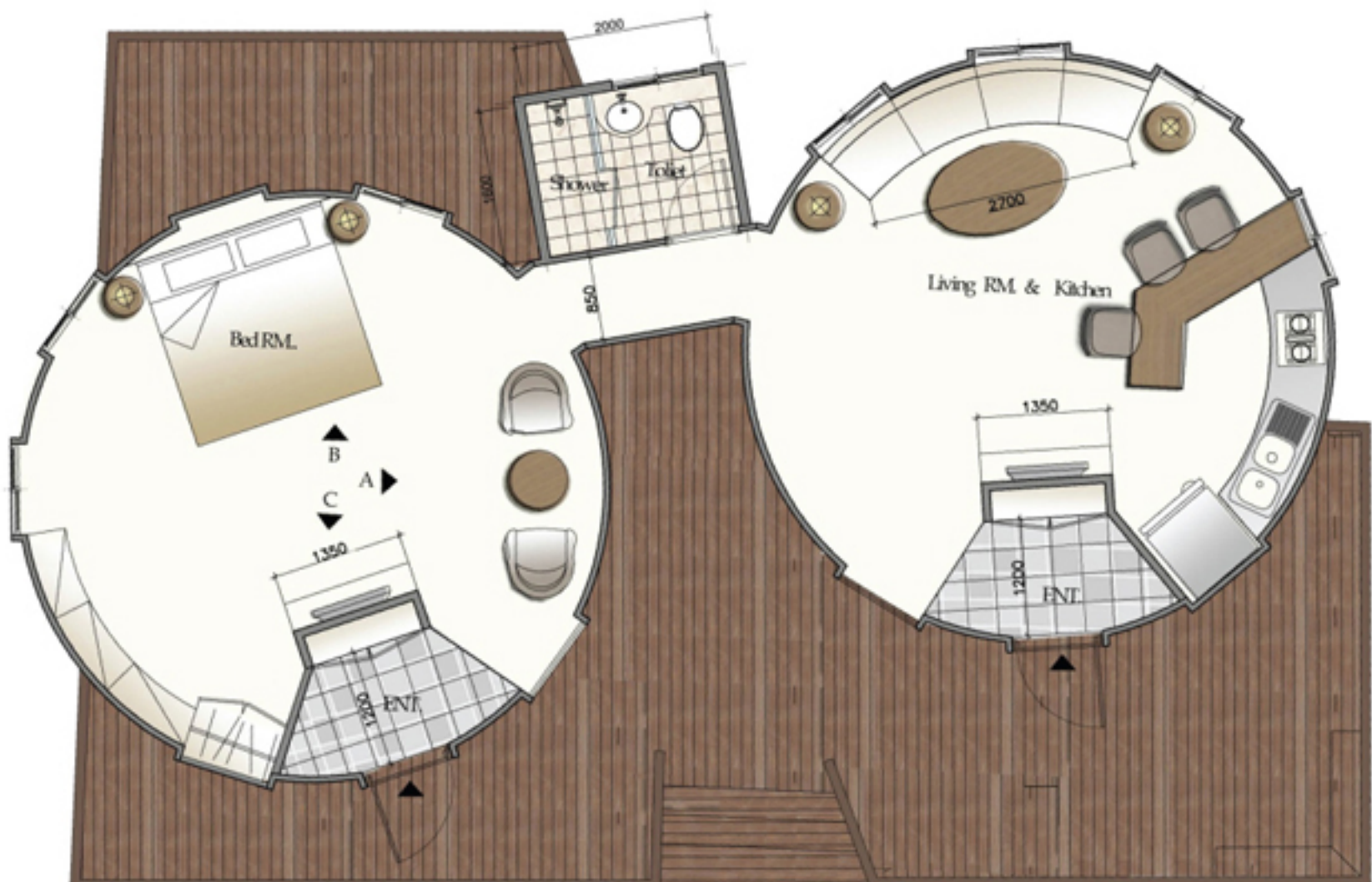
Omni-Domehouse® FLOOR PLANS



ALT 1



ALT 2



Omni-Domehouse® Photo of DOMES



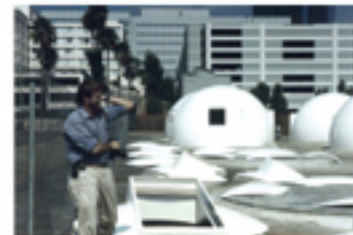
Omni-Domehouse® Photo of DOMES



Omni-Domehouse® Photo of DOMES



Omni-Domehouse® USA - Photo of DOMES



Omni-Domehouse® Photo of DOMES

